



# BODY STRUCTURE

## Tuna WF Dosing Belt Scale

### Spill Trough

A chute is a pipe used to facilitate the drainage of a liquid or gas. The spill chute addresses the piping needs arising from overpressure due to material fatigue or temperature variations within the system.

### With Primary Scraper Tape Cleaning Ease

The Primary Cleaner simplifies the belt cleaning process. The belt scraper separates the materials on a certain belt by various mechanical means and ensures that they are cleaned. The primary scraper makes this process more effective and efficient. Especially in harsh operating conditions and environments with heavy material flow, the use of the primary scraper makes belt cleaning easier and faster. Thus, production efficiency is increased and the cleanliness of the working environment is maintained.

### Full Protection Against Dust

Full protection against dusting aims to prevent a device or system from being affected by external factors such as dust. This protection is a feature that maintains its performance and ensures a long-lasting use without reducing the operating efficiency of the device or system.

### Adjustable Material Flow

Adjustable material flow allows the material flow rate of a device or system to be adjusted to a specific value. This feature is very useful when the material flow rate needs to change due to different operating environment or process requirements.

### Engine

The engine provides a powerful energy source. It provides the level of energy needed to move larger loads and operate efficiently in more intense working conditions.

### Against Tape Loosening

Protection against tape slack aims to prevent a device or system from losing its efficiency due to tape loosening. This loosening can occur as the frequency and weight of the band increase. It may affect the operation of the device or system.

### Loadcell Weighing Chassis: NET weighing facility

Loadcell Weighing Chassis offers the possibility of weighing over the network using loadcell. This makes weighing easier, faster and more accurate. Loadcell's data can be sent over the network directly to a data acquisition device or computer, which can then be analyzed or stored. This saves the cost and time required for the weighing process.

### Against Belt Slip Permanent solution

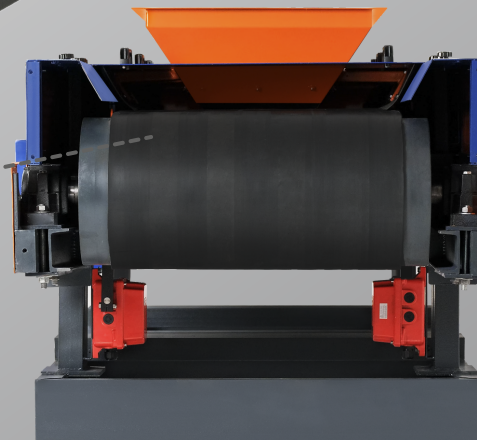
For example, pulleys that reduce belt loosening, sensors that control belt tension, or caps that prevent belt from loosening. Thus, the working efficiency and quality of the device or system is maintained and a long-lasting use is ensured.

### Bunker Discharge Trough

Due to the Bunker Discharge Chute, it helps to provide material flow for net weighing according to the material capacity.

### With Rubber Band, There Is Less Wear

Rubber tape is a type of tape used to cause less wear than other tapes. Rubber material is a more suitable option than other materials due to its high strength, flexibility and low wear levels.



Model	Capacity	Construction	Accuracy	Filling Mouth
T-WF1000	01-10 ton/hour	Stainless steel	± % 0.5	20x25cm
T-WF1500	05-15 ton/hour	Stainless steel	± % 0.5	25x35cm
T-WF2000	5-75 ton/hour	Stainless steel	± % 0.5	10x40cm
T-WF3000	10-250 ton/hour	Stainless steel	± % 0.5	50x50cm
T-WF4000	20-350 ton/hour	Stainless steel	± % 0.5	60x60cm

